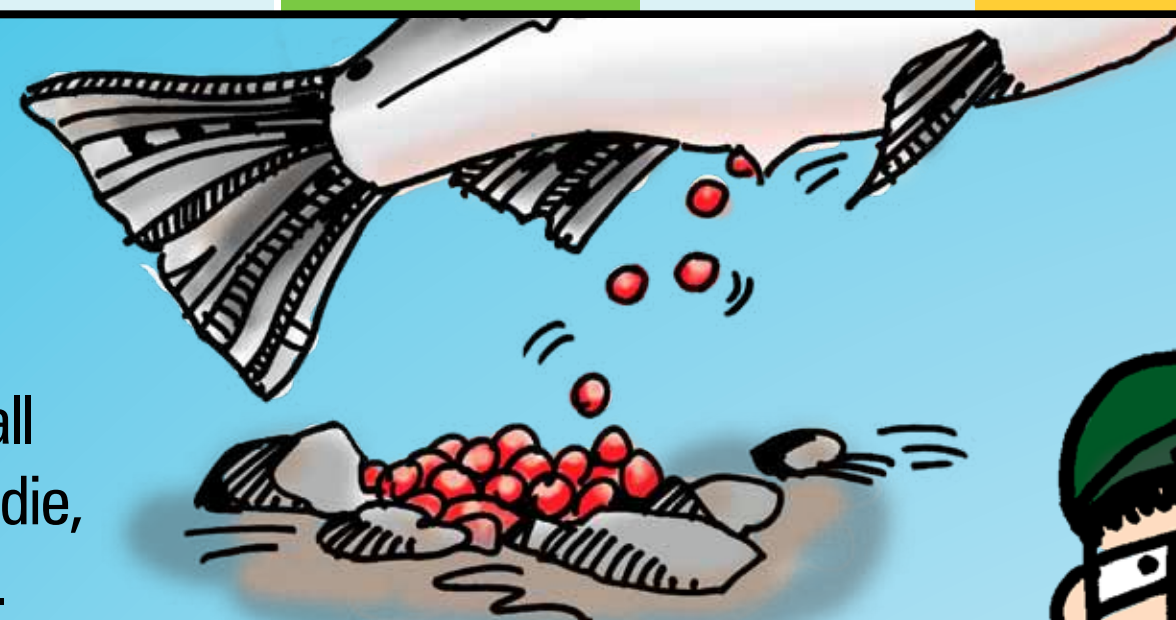




### ADULTS SPAWN

Female digs a redd in natal stream. Eggs, the size of a small pea, are fertilized and parents die, producing important nutrients.

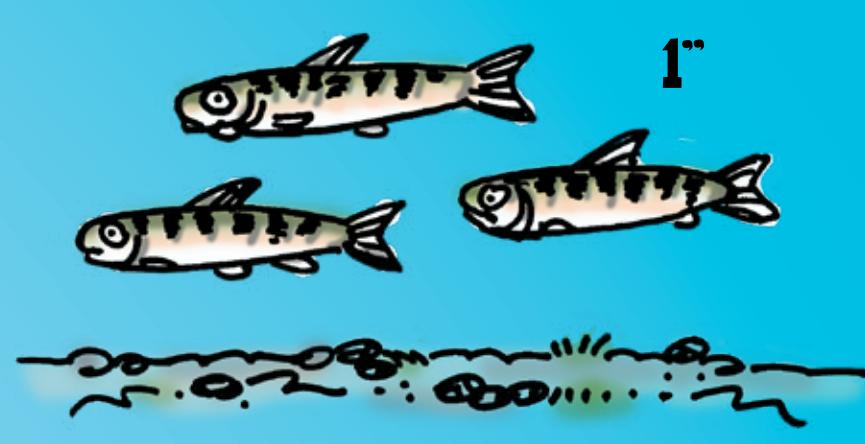


TAKE A TRIP WITH SOCKEYE SALMON



### FRY ARE SMALL

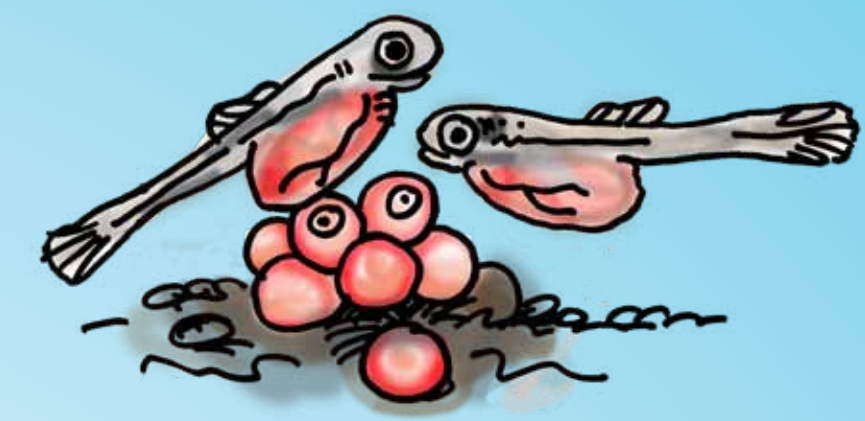
Fry stay in their natal waters for about one year.



Exhausted, thin salmon return to their natal stream to spawn. And the cycle begins again.

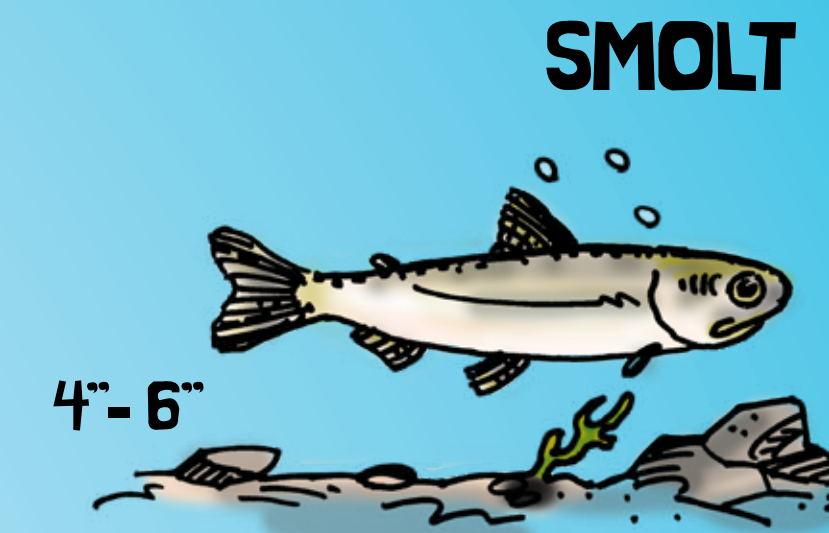


PLEASE DON'T STEP ON A REDDI!



### EGGS HATCH. ALEVIN DEVELOP

Eggs hatch in freshwater in 3-4 months. Alevin hang out in the redd until developed into fry.



### SMOLT

Ready to leave the stream! These 4"-6" youngsters face many obstacles as they head down the Columbia River to the ocean – predators, dams, etc.

### WANAPUM AND PRIEST RAPIDS DAMS

Adults go up the ladder, designed to be similar to natural rapids, to return to their natal stream.



## The Salmon Lifecycle

# SMELL YOUR WAY HOME



THE LADDER WILL LEAD YOU HOME!



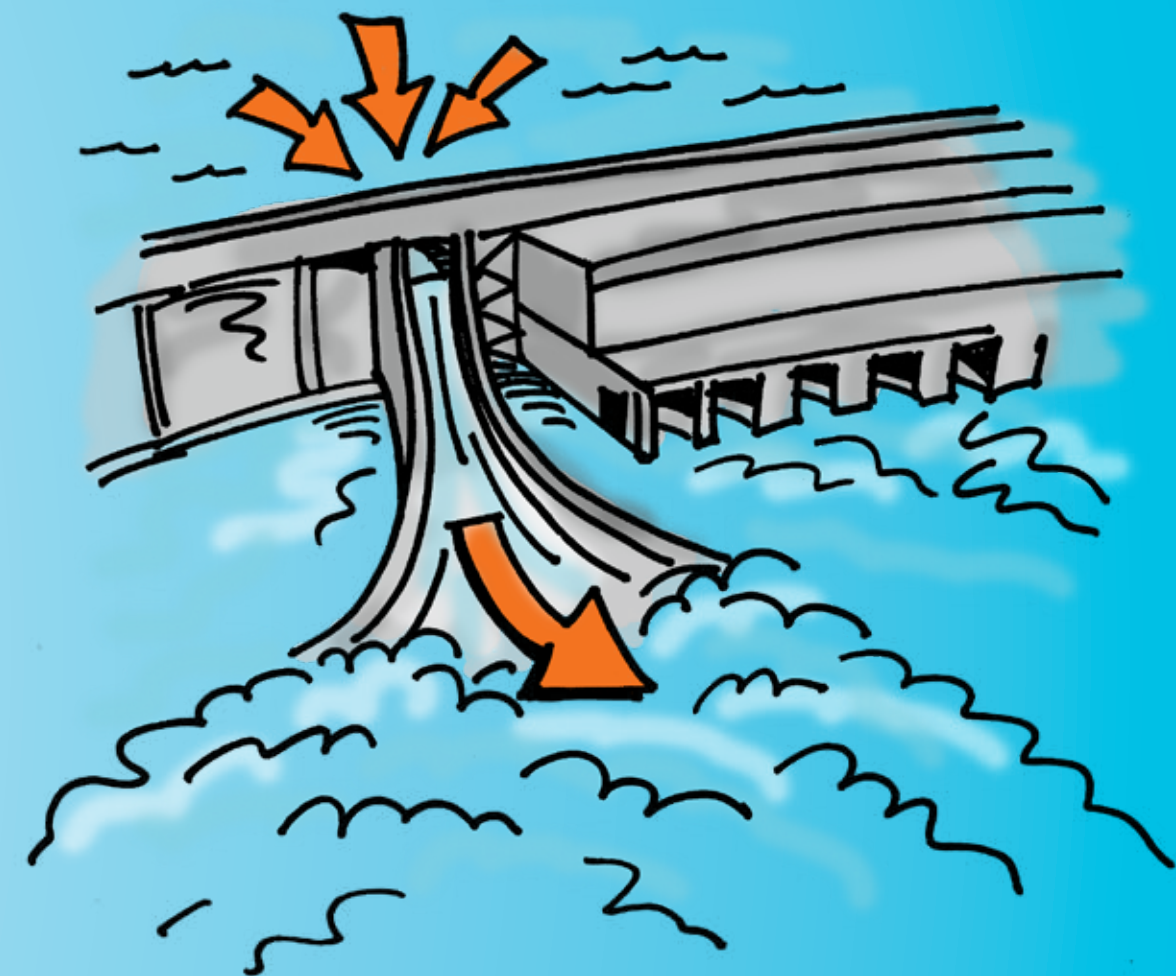
### THE NOSE KNOWS

Salmon smell their way home.

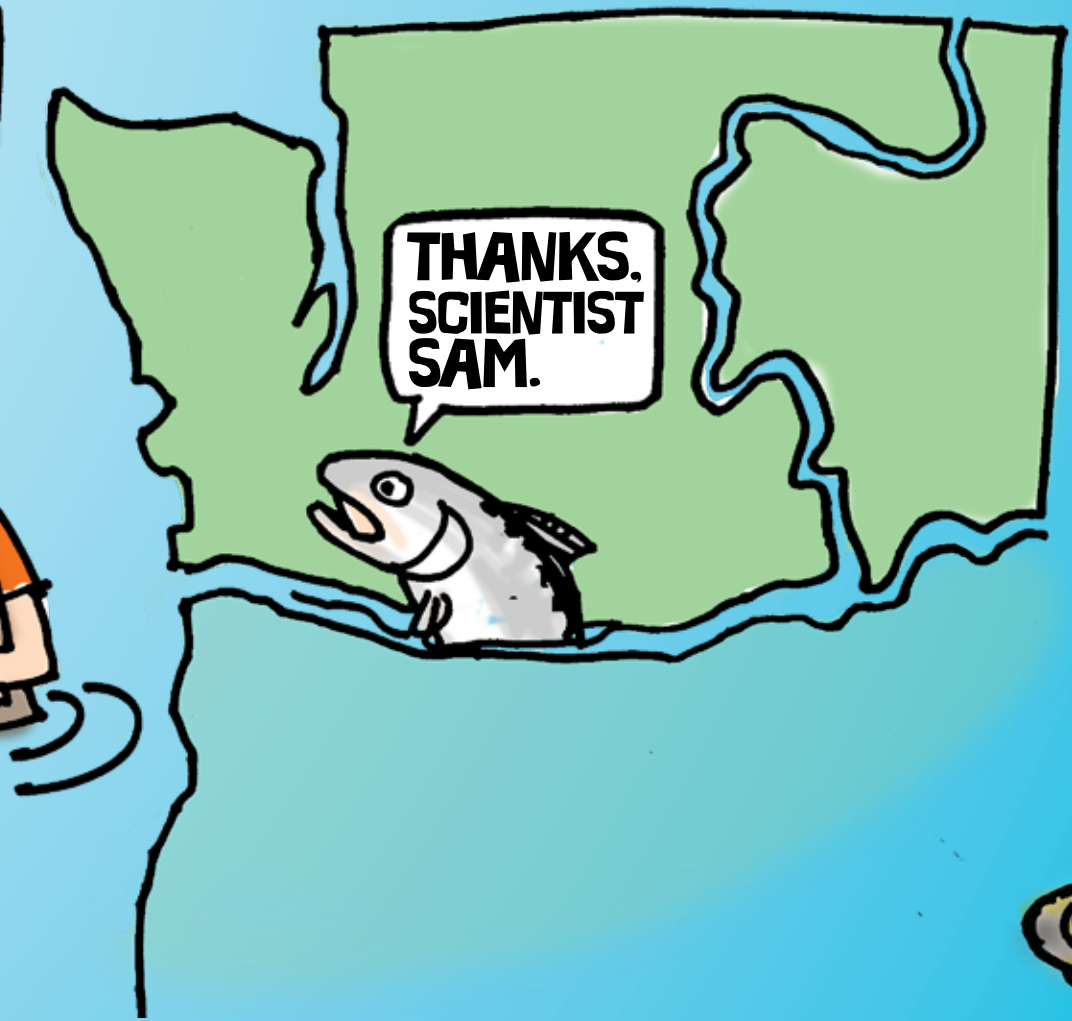


### WANAPUM DAM

Most Smolts go down the slide as they leave their natal stream.



CAREFUL! GULLS EAT SMOLTS.



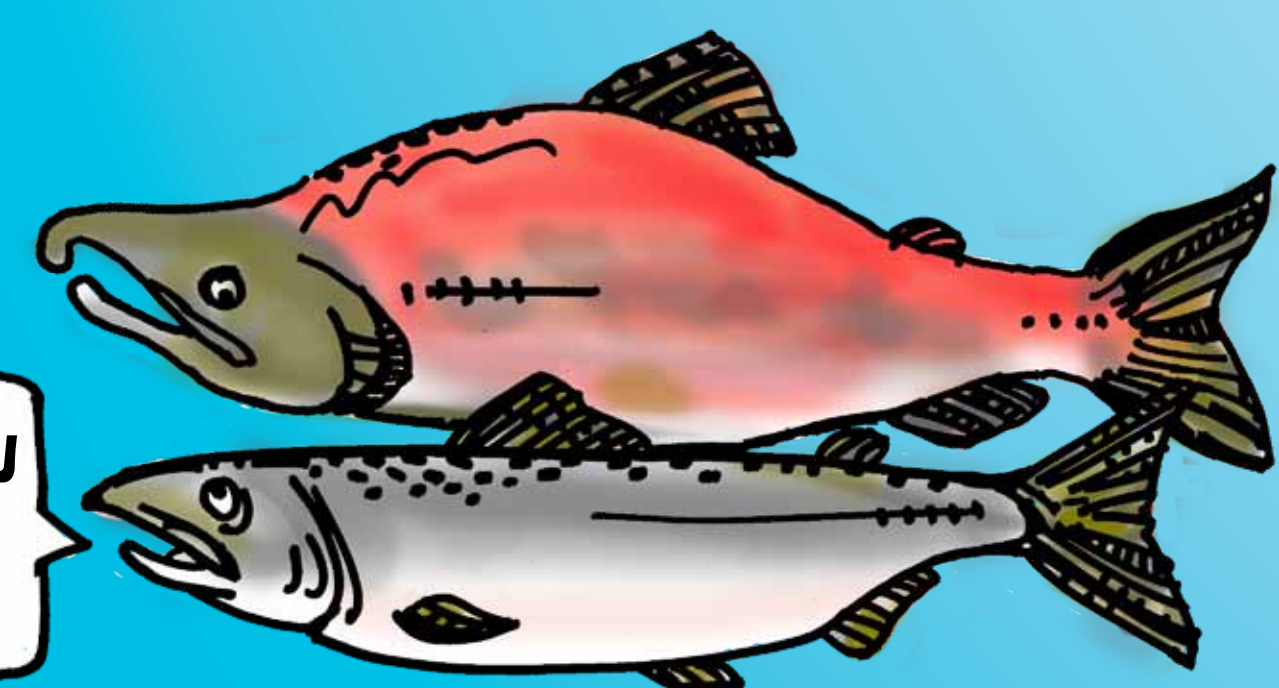
THANKS SCIENTIST SAM.

### ESTUARY STAGE

Time to get used to salty water.

### CHANGE COLOR

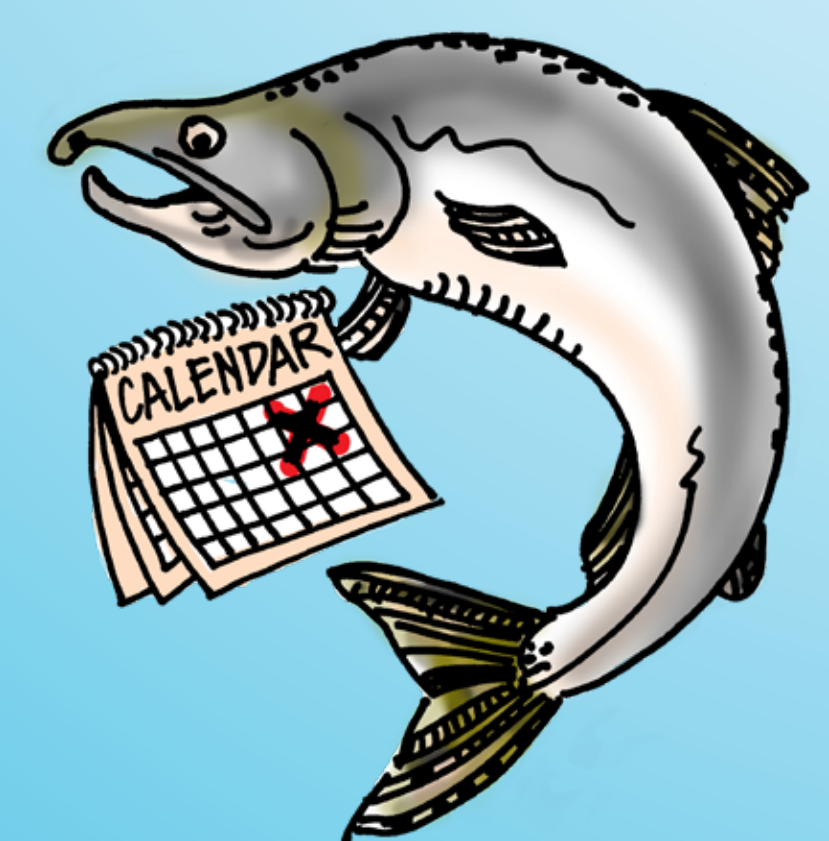
Return to estuary: Of the five species of Pacific Salmon only Sockeye change from silver to red in freshwater to prepare for finding a mate and spawning.



ARE YOU "REDDY" TO GO?

### HEAD FOR HOME

The epic journey begins after 2-5 years of packing on the pounds. Salmon stop eating on their trip home.

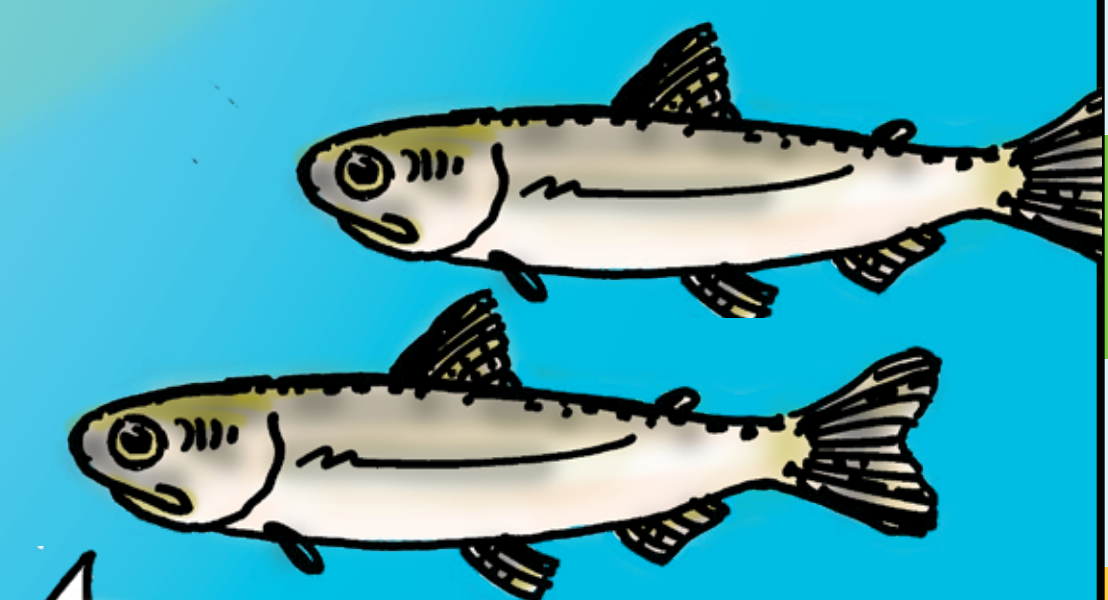


ALL YOU CAN EAT BUFFET



### OCEAN DWELLERS

Zooplankton, krill, invertebrates, small crustaceans, other fish are on the menu.



TIME TO FATTEN UP!